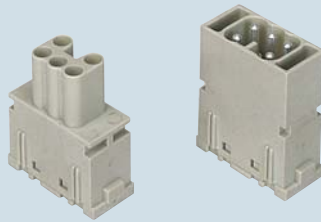


the modular inserts must be installed in suitable frames which in turn are installed in traditional housings or COB panel support

frames for modular units ..... page: 151

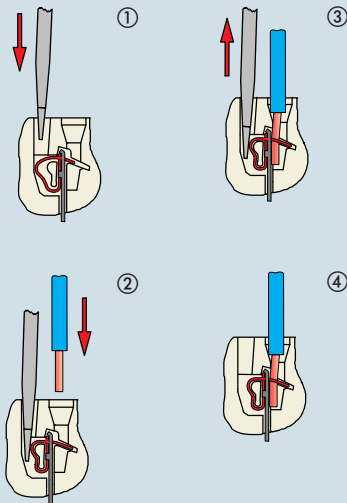
- characteristics according to EN 61984:  
**16A 400V 6kV 3**
- UL, CSA, CCC, GL certified
- for maximum current load, see the insert load curve section on page 34

modular units,  
spring connection

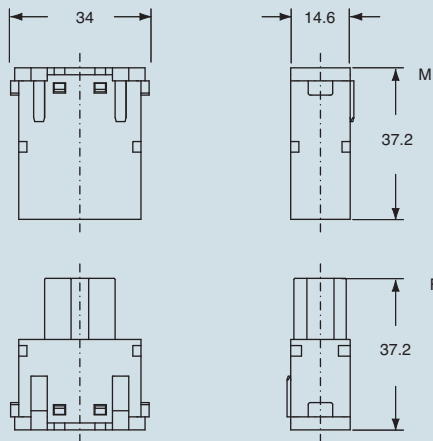


description	part No.
- female inserts with female contacts - male inserts with male contacts	<b>CX 05 SF</b> <b>CX 05 SM</b>

connection with spring terminal

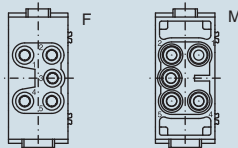


dimensions in mm



contacts side (front view)

side with reference arrow ▲



- inserts for section conductors:  
0.14 - 2.5 mm<sup>2</sup> - AWG 26 - 14
- stripping length see section feature of inserts on page 13
- footprint 1 module

dimensions shown are not binding  
and may be changed without notice